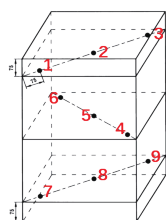
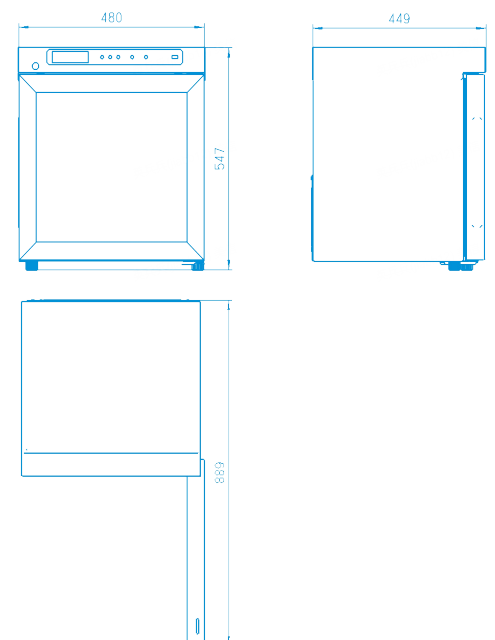
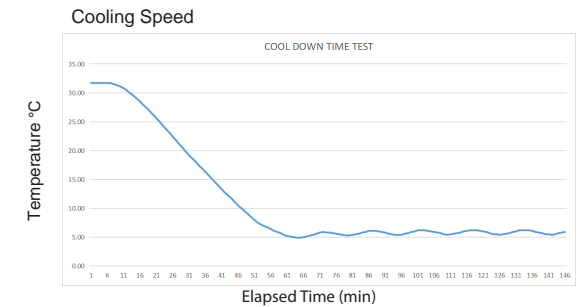
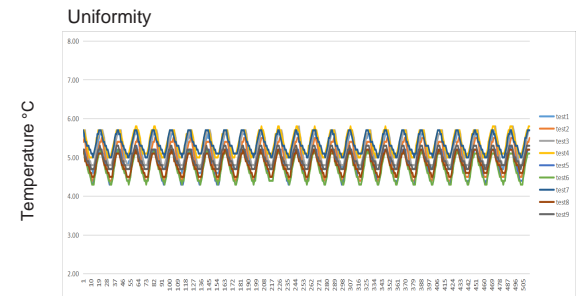


Application, Rating, & Electrical Data	
Application	Pharmacy refrigerator
Storage Volume ( L )	42 ( 1.48 co.ft)
Temperature Range	+2°C to +8°C
Default Set Point	+5°C
Power	115V/60Hz   220-240 ~ V/50Hz
Current	1A   0.75A
Power Cord Length	1.7m
Certification	CE/UL
Door type	Low-E Glass Door/ electrica heating glass(optional)
Application Environment	Non-corrosive, non-flammable, non-explosive
Ambient Operating Temperature	+16°C to +32°C
Refrigeration	
Refrigeration System	Forced-air/hydrocarbon Refrigerant
Compressor	Hermetic
Condenser Type	Built-in
Expansion Device	Cap tube
Evaporator Type	Plate Evaporator
Defrost Method	Automatic
Refrigerant	R600a
Controller / Configuration Settings	
Display screen	LED
Controller Type	Microprocessor
Security	Lockable door, password protected settings
Control Sensor	RTD, stainless steel
Communication Ports	USB, Remote alarm contacts
Power Failure Alarm	Yes
High/Low Alarms	Yes, fully adjustable
Door Ajar Alarm	Yes, fully adjustable
Min/Max Temperature	Yes, display and reset
Download	Yes, via USB. PDF
Temperature Log	Yes, download via USB
Temperature Monitoring Ballast	Yes
Battery Back-up	Yes, 15 hr display and alarm back-up   Rechargeable 12V, lead acid
Dimensions	
Interior (w x h x d)mm	400*345*380 mm
Exterior (w x h x d)	485*450*450 mm
Access Port	N
Shelf	1   15 kg max capacity/shelf
Leveling Feet	Y
Net Weight	CE 25.5   UL 25.5 kg
Gross Weight	CE 27.5   UL 28.5 kg

Performance Characteristics (normal operating conditions)	
Uniformity   ( °C )	±2.0
Recovery to 8°C after 1 min door opening   ( min )	8
Temperature fluctuation   ( °C )	< 3
Energy consumption   ( kWh/day )	CE 0.65   UL 0.95
Noise emission   ( dB )	45
Heat rejection   ( BTU/hr )	460
Pull-down time to 6°C   ( min )	52

All performance data from 42L refrigerator, 25 ambient, 5.0°C



Typical Temperature Map

	test1	test2	test3	test4	test5	test6	test7	test8	test9
Avg	4.88	5.24	5.15	4.13	4.32	4.92	4.71	4.78	5.37
Max	5.30	5.60	5.50	4.80	4.70	5.20	5.00	5.10	5.70
Min	4.40	4.90	4.70	3.50	4.00	4.60	4.40	4.40	5.10

Location of test probes

